

District Integrated Summary

20

711

Included in This Report:

- SAT®
- SAT Subject Tests™
- Advanced Placement Program®
- PSAT/NMSQT®
- ReadiStep™

Coll

OVERVIEW

W / /

SAT®

W / / ()

AP® (continued)

W / /

PSAT/NMSQT®

W / / W / / W / / W / /

District Integrated Summary 2012-2013

SACRAMENTO CITY UNIFIED SCHOOL DISTRICT

OVERVIEW: Number of Students Taking SAT, SAT Subject Tests, AP, PSAT/NMSQT and ReadStep.



OVERVIEW:

District Integrated Summary 2012-2013

SACRAMENTO CITY UNIFIED SCHOOL DISTRICT

OVERVIEW: Fee Waivers/Fee Reduction for SAT, AP and PSAT/NMSQT



0 % 0
0 0

W

0 % 0
0 0

W

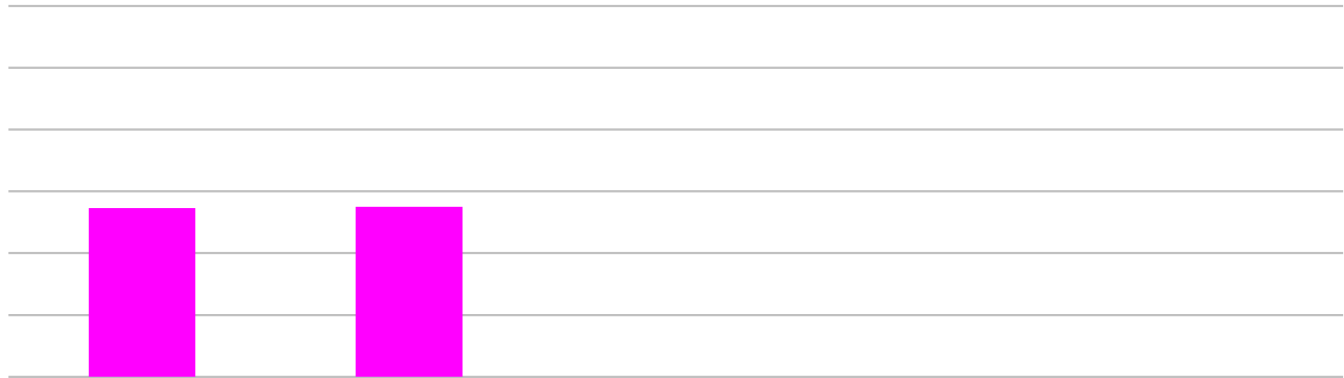
0 % 0
0 0



District Integrated Summary 2012-2013

SACRAMENTO CITY UNIFIED SCHOOL DISTRICT

SAT: Performance and Number of Test-Takers (Part 1 of 2)



District Integrated Summary 2012-2013

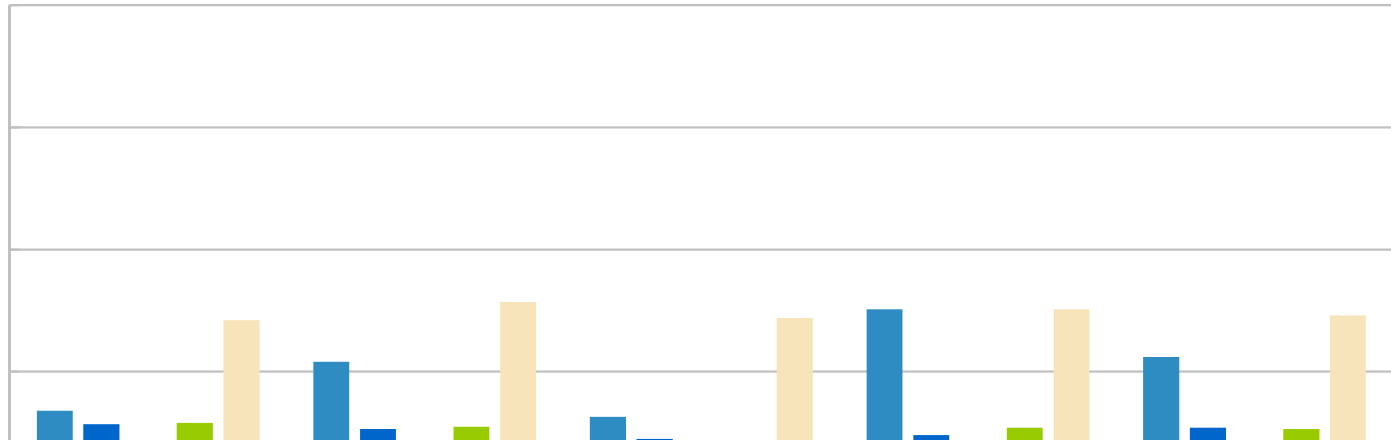
SACRAMENTO CITY UNIFIED SCHOOL DISTRICT

SAT: Performance and Number of Test-Takers (Part 2 of 2)

District Integrated Summary 2012-2013

SACRAMENTO CITY UNIFIED SCHOOL DISTRICT

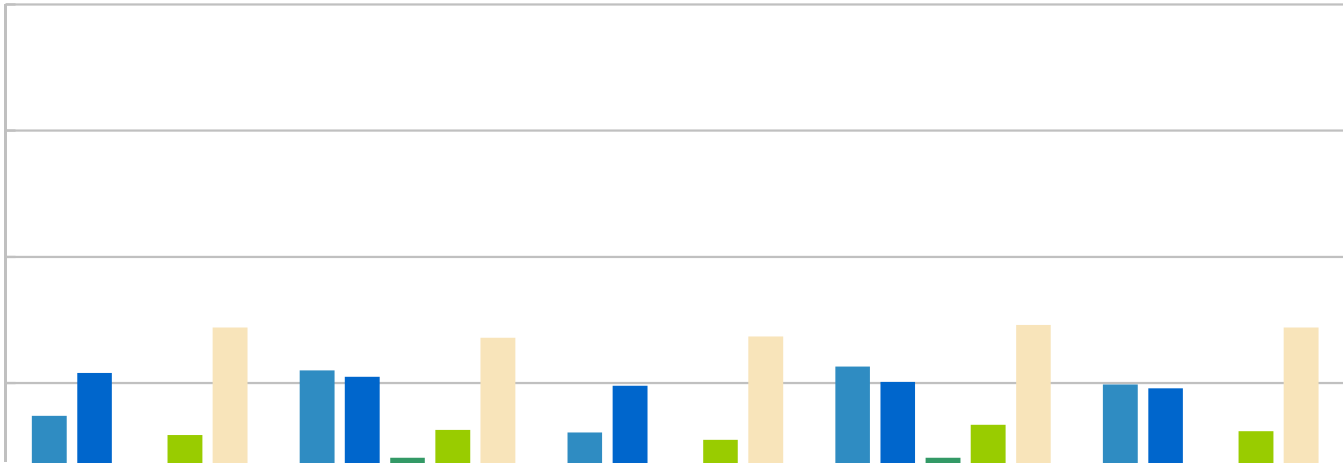
SAT: Critical Reading Performance by Ethnic Group



District Integrated Summary 2012-2013

SACRAMENTO CITY UNIFIED SCHOOL DISTRICT

SAT: Mathematics Performance by Ethnic Group

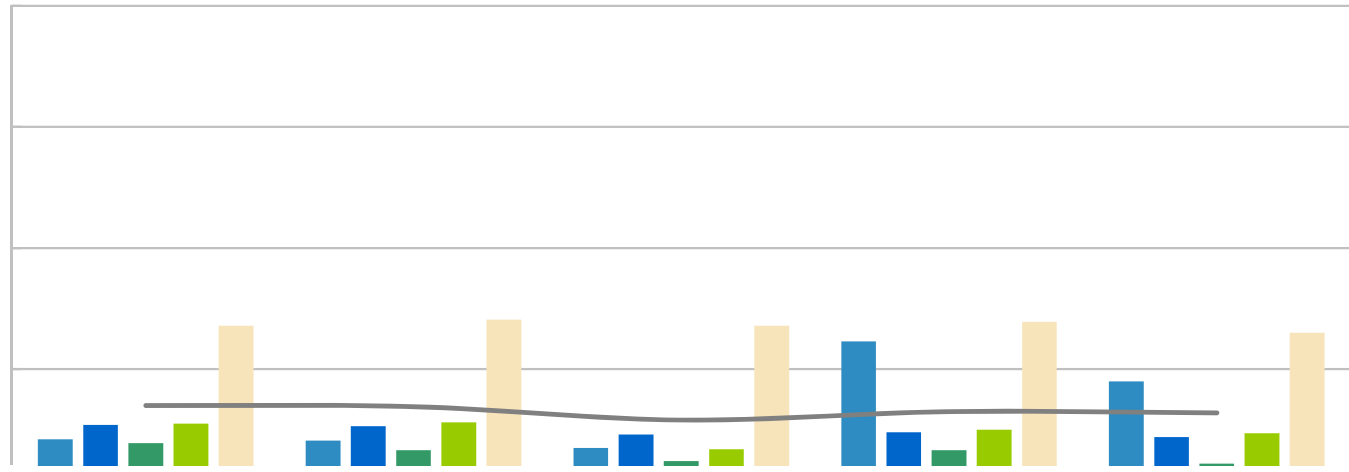


District Integrated Summary 2012-2013

SACRAMENTO CITY UNIFIED SCHOOL DISTRICT

SAT: Writing Performance by Ethnic Group

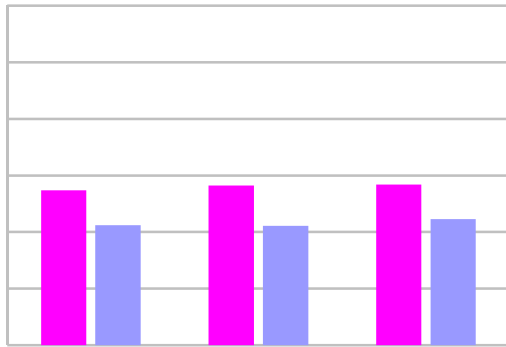
Writing
Mean



District Integrated Summary 2012-2013

SACRAMENTO CITY UNIFIED SCHOOL DISTRICT

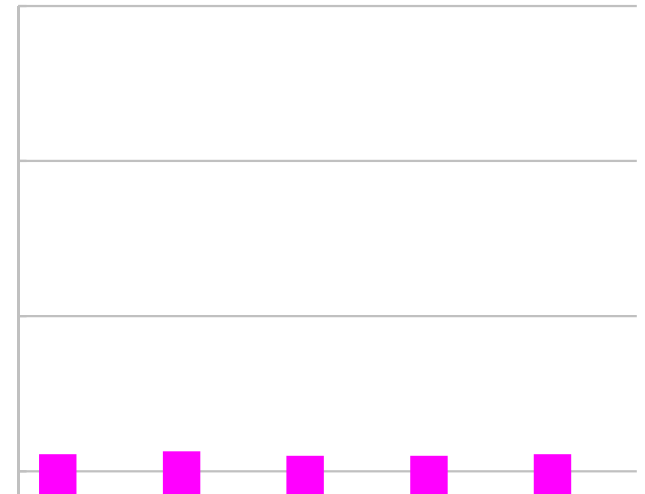
SAT: Performance Based on Self-Reported PSAT/NMSQT Participation



District Integrated Summary 2012-2013

SACRAMENTO CITY UNIFIED SCHOOL DISTRICT

SAT: Critical Reading Performance by Trends in Academic Preparation

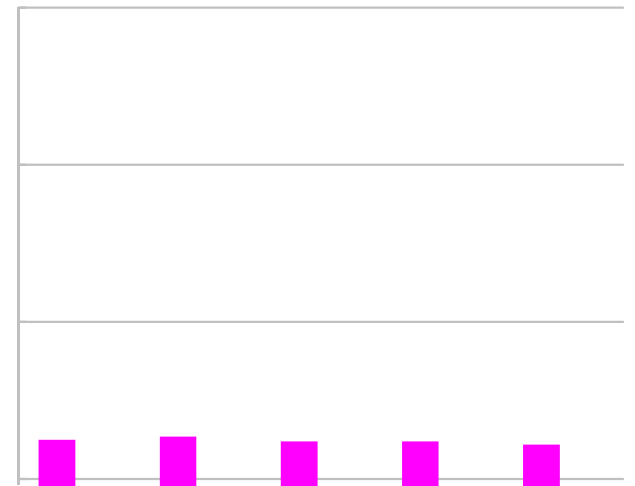
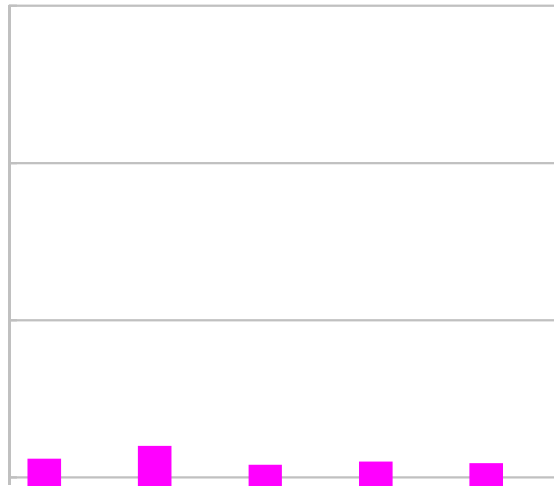


District Integrated Summary 2012-2013

SACRAMENTO CITY UNIFIED SCHOOL DISTRICT

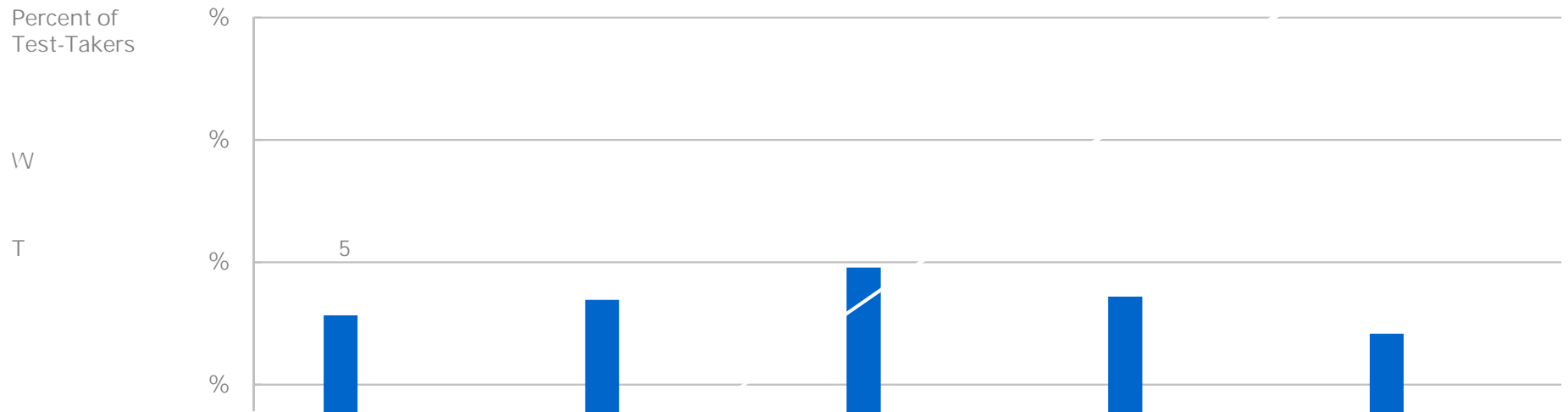
SAT: Mathematics Performance by Trends in Academic Preparation

SACRAMENT
O CITY
UNIFIED
SCHOOL
DISTRICT





SAT Subject Tests: Percent Participation by Ethnic Group





SA

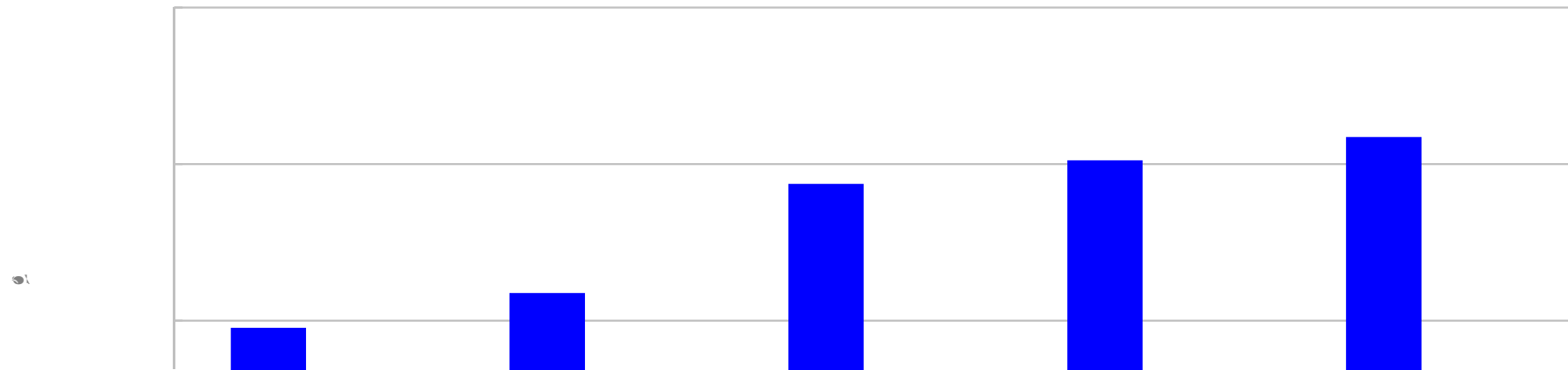
AP:

1
2
3
4
5
6
7
8
9
10
11
12



| | # | % | | | | | | | # | % | | | | | | |
|---|---|---|---|---|---|---|---|---|---|---|---|---|---|---|---|---|
| | | % | | | | | | | | | | | | | | |
| % | | % | | | | | | | | % | | | | | | |
| % | | % | % | % | % | % | % | % | | % | % | % | % | % | % | % |
| % | | % | % | % | % | % | % | % | | % | % | % | % | % | % | % |

AP: Number of Examinations and Number of Examinations with Grades of 3, 4 or 5



Percent of
members

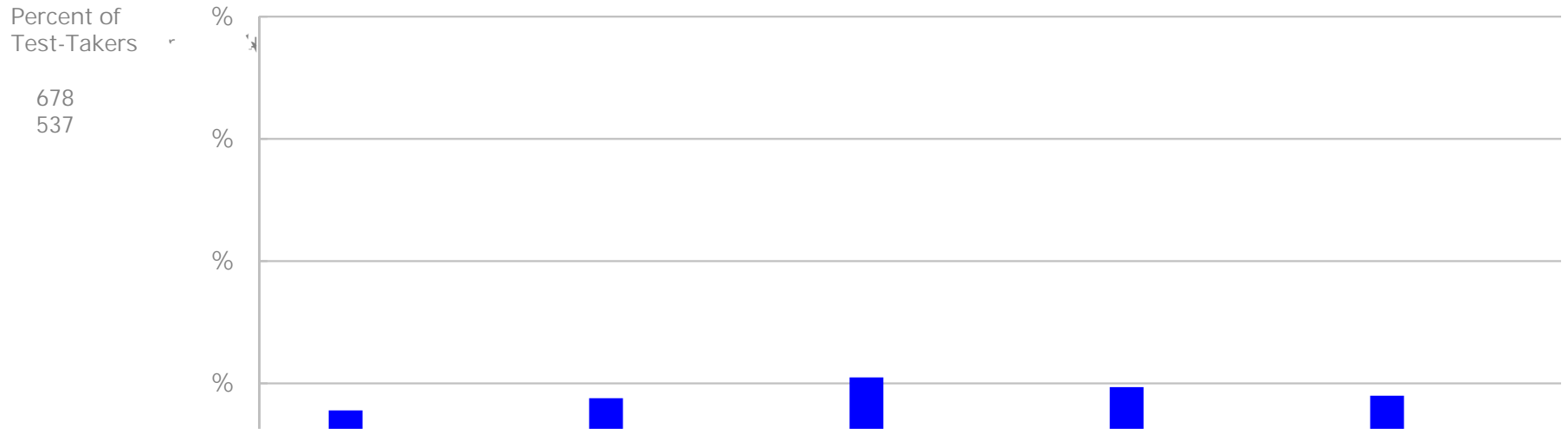
4



District Integrated Summary 2012-2013

SACRAMENTO CITY UNIFIED SCHOOL DISTRICT

AP: Participation by Ethnic Groups with Grades 3, 4 or 5





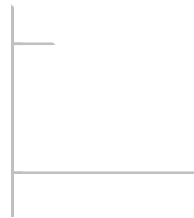
PSAT/NMSQT: Junior Participation and Performance Overview

| Category | 2012-2013 | | | | 2011-2012 | | | | 2010-2011 | | | |
|-------------|-----------|---|-------|---|-----------|---|-------|---|-----------|---|-------|---|
| | # | % | Score | W | # | % | Score | W | # | % | Score | W |
| Overall | | % | | | | % | | | | % | | |
| Elementary | | % | | | | % | | | | % | | |
| High School | | % | | | | % | | | | % | | |
| Elementary | | % | | | | % | | | | % | | |
| High School | | % | | | | % | | | | % | | |





Critical
Mean



District Integrated Summary 2012-2013

SACRAMENTO CITY UNIFIED SCHOOL DISTRICT

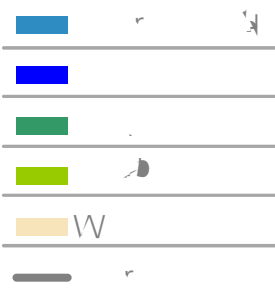
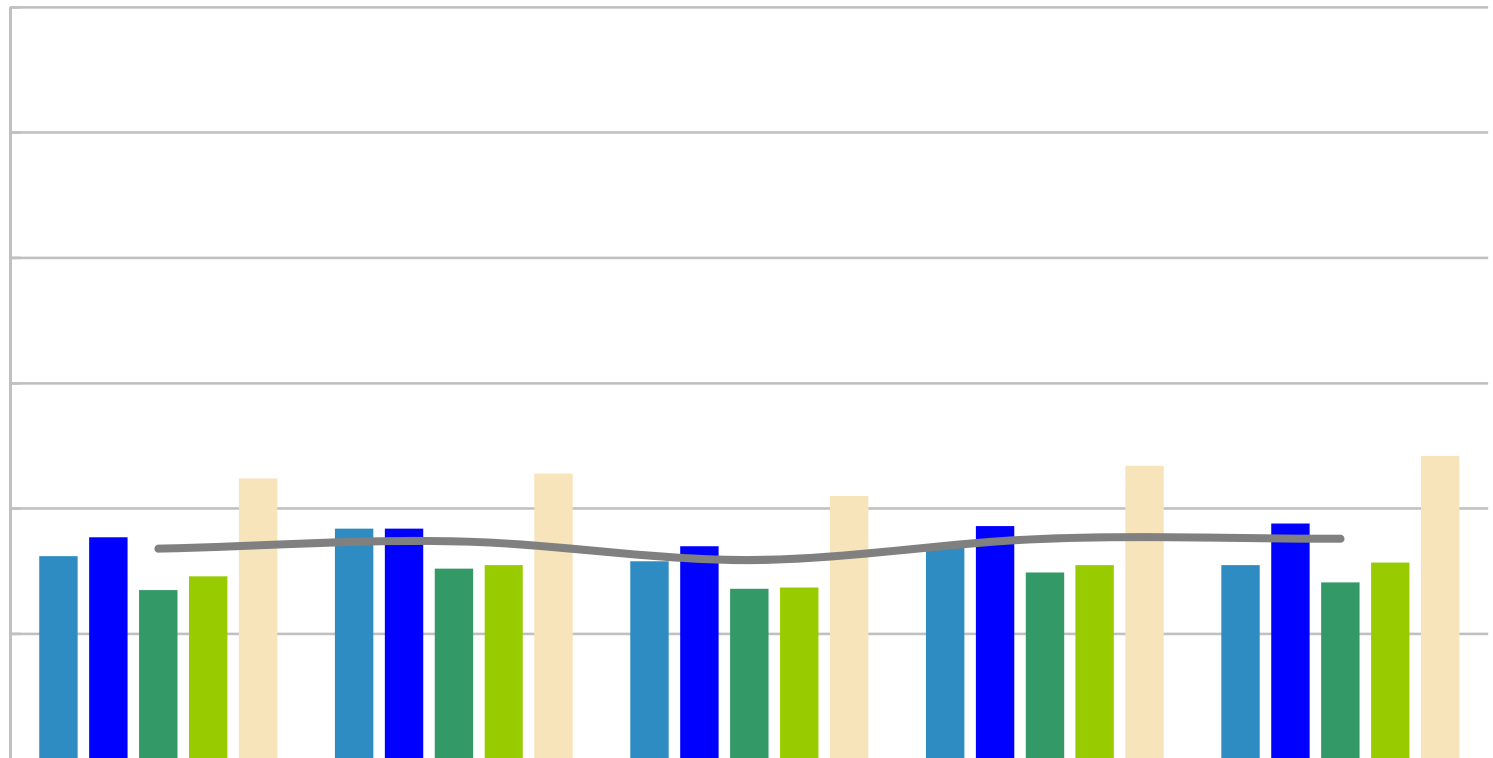
PSAT/NMSQT: Sophomore Mathematics Performance by Ethnic Group

Mathematics Mean

| |
|--|
| |
| |
| |
| |

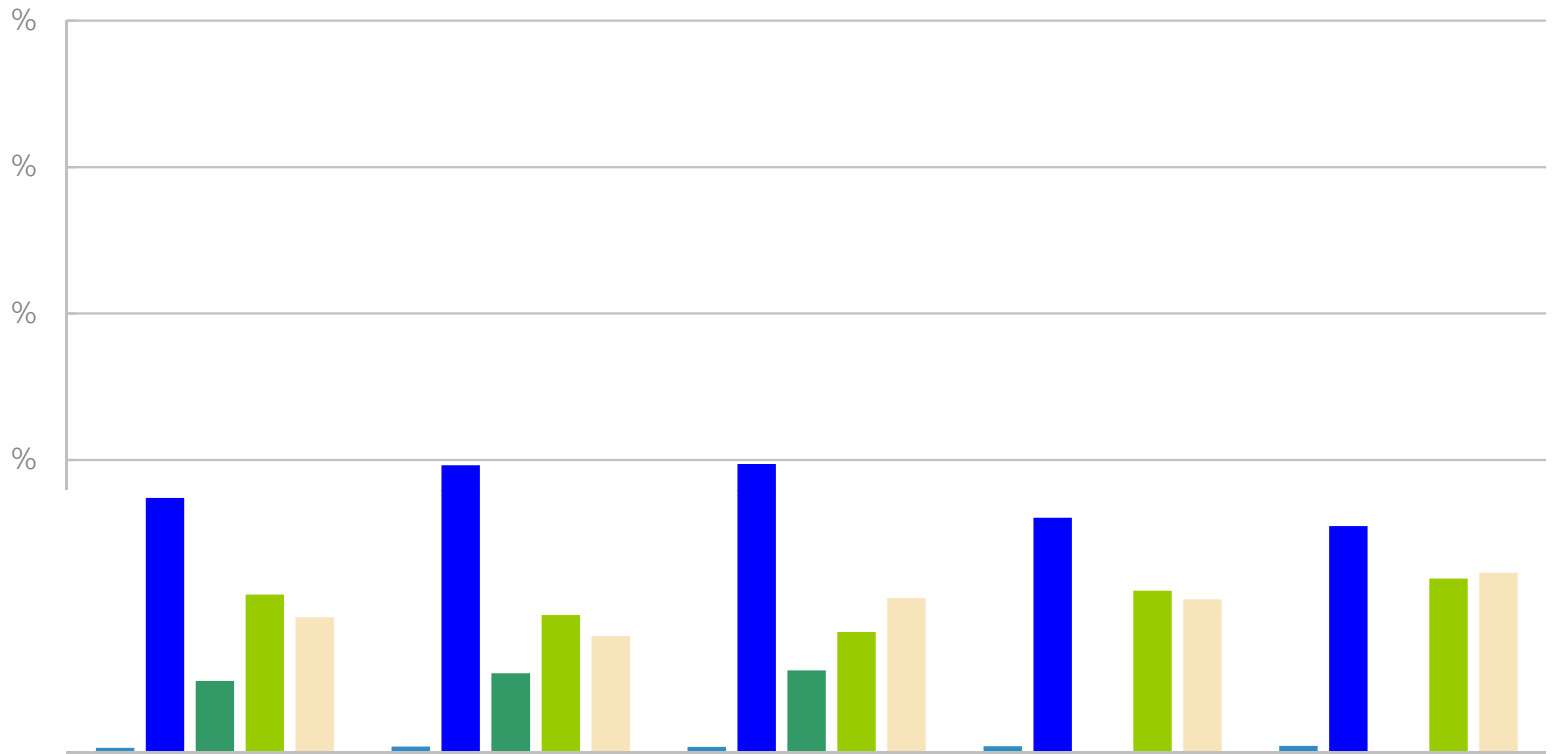
PSAT/NMSQT: Sophomore Writing Performance by Ethnic Group

Writing Mean



PSAT/NMSQT: Junior Participation by Ethnic Group

Percent of Test-Takers



W

Total

9Tmlfb0Tm-0.0016 Tc47.5 741.12 l57. Tm 537.8437.549.6 Tm0.002talmer of Junio

PS. **MSQT: Junior Critical Reading Performance by Ethnic Group**

Critical Reading
Mean

